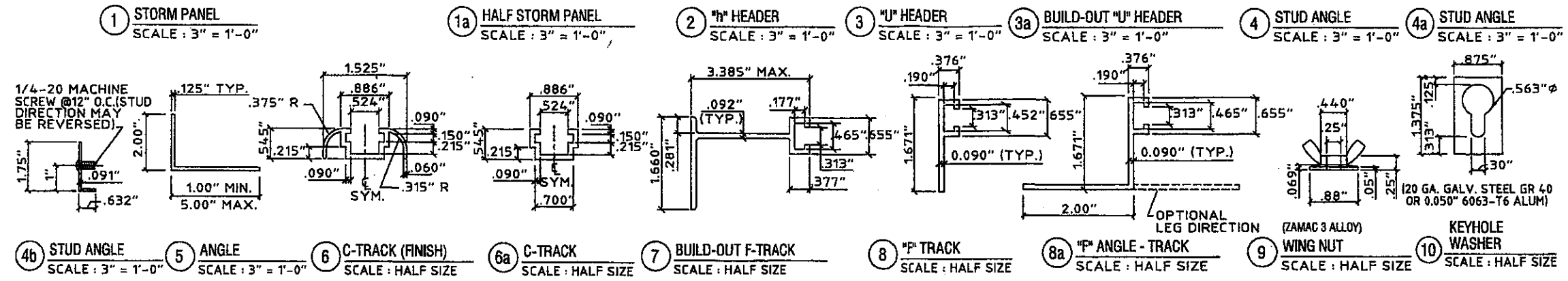
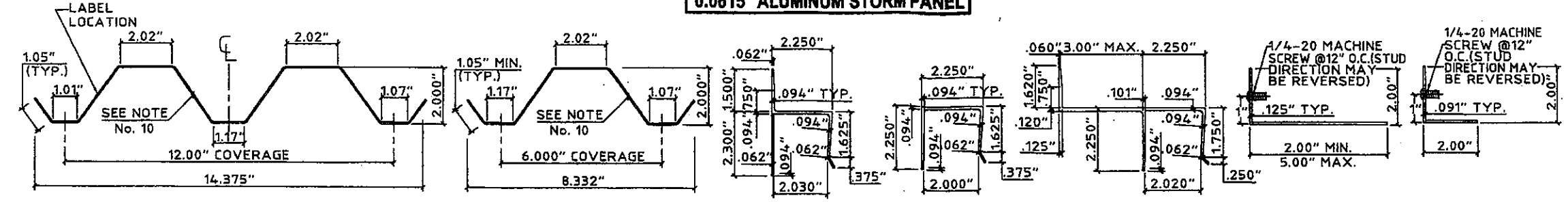
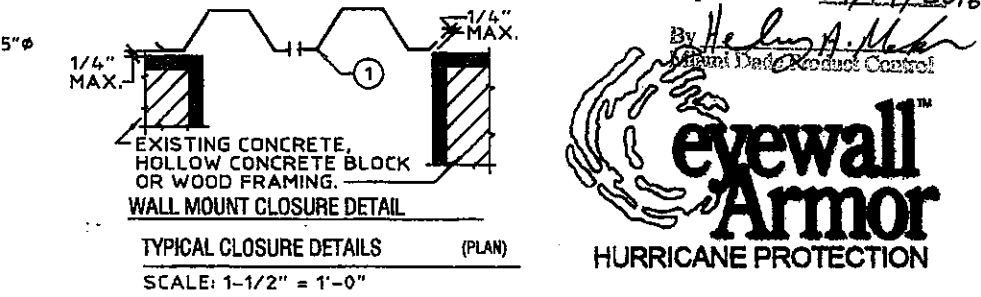
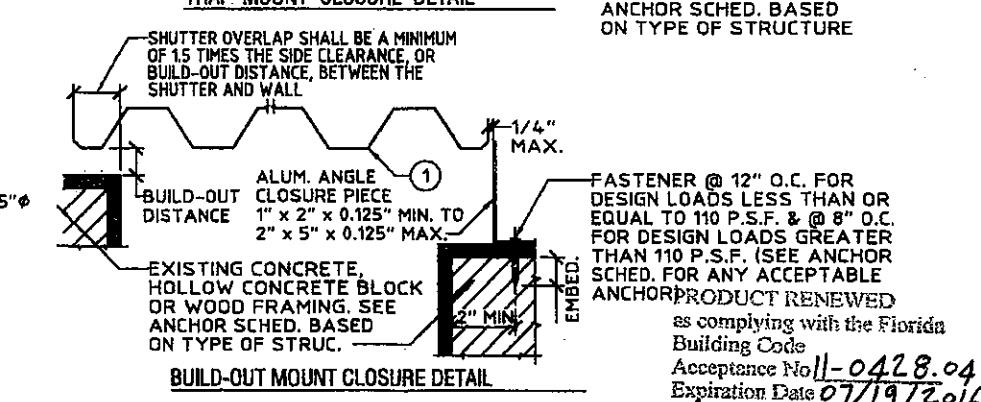
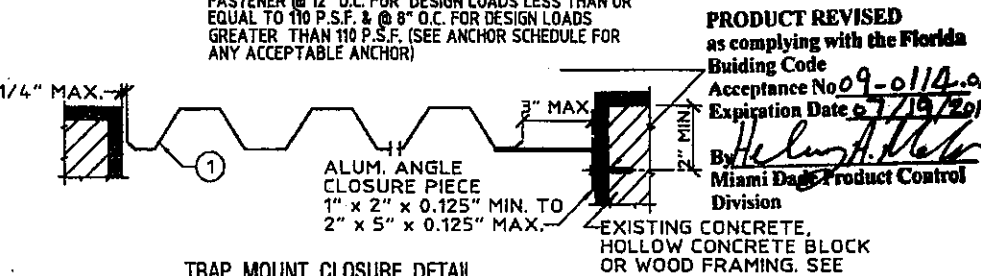
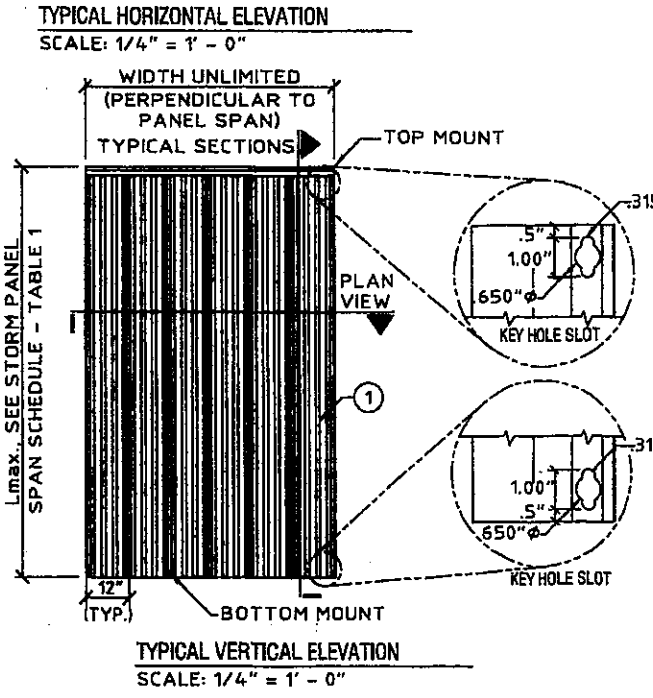
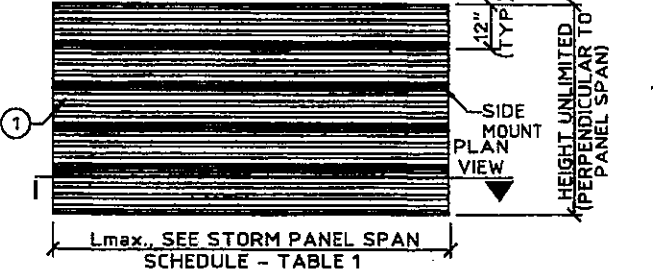


0.0615" ALUMINUM STORM PANEL

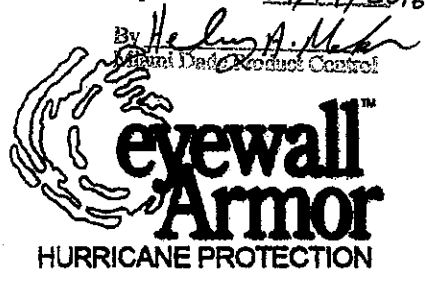


- GENERAL NOTES:**
- THESE APPROVAL DOCUMENTS REPRESENT A SHUTTER SYSTEM ANALYZED WITH THE PROVISION SET FOR THE ISSUANCE OF A NOTICE OF ACCEPTANCE (NOA) BY MIAMI-DADE COUNTY PRODUCT CONTROL DIVISION FOR THE HIGH VELOCITY HURRICANE ZONE (HVHZ) OF THE FLORIDA BUILDING CODE.
 - NO INCREASE IN ALLOWABLE STRESS HAS BEEN USED IN THE DESIGN OF THIS PRODUCT. WIND LOAD DURATION FACTOR $C_d = 1.6$ WAS USED FOR WOOD LAG SCREW DESIGN.
 - DETERMINE THE POSITIVE AND NEGATIVE DESIGN LOADS TO USE WHEN REFERENCING THESE DOCUMENTS IN ACCORDANCE WITH THE GOVERNING CODE AND GOVERNING WIND VELOCITY.
 - THESE APPROVAL DOCUMENTS ARE GENERIC AND DO NOT INCLUDE INFORMATION FOR SITE-SPECIFIC APPLICATION OF THIS SHUTTER SYSTEM.
 - USE OF THESE APPROVAL DOCUMENTS SHALL COMPLY WITH CHAPTER 61G15-23 OF THE FLORIDA ADMINISTRATIVE CODE.
 - THESE APPROVAL DOCUMENTS, ARE SUITABLE TO BE APPLIED BY THE CONTRACTOR PROVIDED THE CONTRACTOR DOES NOT DEVIATE FROM THE CONDITIONS DETAILED HEREIN AND THE CONTRACTOR VERIFIES THAT THE EXISTING STRUCTURE DOES NOT DEVIATE IN EITHER FORM OR MATERIAL FROM THE STRUCTURAL SUBSTRATES DETAILED HEREIN.
 - ANY MODIFICATIONS OR ADDITIONS TO THESE APPROVAL DOCUMENTS WILL VOID THE APPROVAL DOCUMENTS.
 - WHEN THE SITE CONDITIONS DEVIATE FROM THESE APPROVAL DOCUMENTS, THE BUILDING OFFICIAL MAY ELECT ONE OF THE FOLLOWING OPTIONS:
 A) REQUIRE THAT SITE SPECIFIC DOCUMENTS BE PREPARED, SIGNED, DATED AND SEALED BY A LICENSED ENGINEER OR REGISTERED ARCHITECT, WHICH DETAIL AND JUSTIFY THE DEVIATION. SAID DOCUMENTS SHALL BE SUBMITTED TO THE PRODUCT ENGINEER FOR REVIEW AS A CONDITION TO THE BUILDING OFFICIAL GRANTING HIS/HER APPROVAL.
 B) REQUIRE THAT A ONE-TIME SITE SPECIFIC APPROVAL BE APPLIED FOR AND SECURED FROM THE MIAMI-DADE COUNTY PRODUCT CONTROL DIVISION.
 - WHEN THE SITE CONDITION DEVIATIONS OCCUR WITHIN THE HIGH VELOCITY HURRICANE ZONE AREAS ONLY OPTION "B" SHALL BE ACCEPTED BY THE BUILDING OFFICIAL.
 - PRODUCT MARKINGS SHALL BE WITHIN 12" OF ONE END OF THE PANEL WITH A MINIMUM OF ONE MARKING PER PANEL AND SHALL BE PERMANENTLY LABELED AS FOLLOWS:
 TOWN & COUNTRY INDUSTRIES.
 FT. LAUDERDALE, FL
 MIAMI-DADE COUNTY PRODUCT APPROVED
 - STORM PANELS SHALL BE 3004-H34 OR 5052-H34 ALUMINUM ALLOY, WITH THE FOLLOWING MINIMUM THICKNESS AND MECHANICAL PROPERTIES: NOMINAL 0.0615"
 - ALL EXTRUSIONS SHALL BE 6063-T6 ALUMINUM ALLOY, U.O.N
 - ALL BOLTS AND WASHERS SHALL BE GALVANIZED OR STAINLESS STEEL WITH A MINIMUM TENSILE STRENGTH OF 60 K.S.I., U.O.N.
 - TOP & BOTTOM DETAILS SHOWN MAY BE INTERCHANGED AS FIELD CONDITIONS DICTATE. PANELS MAY BE MOUNTED HORIZONTALLY WHERE APPLICABLE, EXCEPT FOR "h" AND "u" HEADER MOUNTING CONDITIONS.



PRODUCT REVISED
 as complying with the Florida Building Code
 Acceptance No 09-0114.04
 Expiration Date 6/7/19/2011
 By *Helmut A. Meier*
 Miami Dade Product Control Division

PRODUCT RENEWED
 as complying with the Florida Building Code
 Acceptance No 11-0428.04
 Expiration Date 07/19/2016
 By *Helmut A. Meier*
 Miami Dade Product Control Division



KNEZEVICH ASSOCIATES
 Consulting Engineers
 2880 S.W. 105th Terrace, Davie, Florida 33324 27888
 (864) 821-8833 • F (854) 452-7800
 website: www.knezevich.com email: vk@knezevich.com

Town & Country
 Wholesale Aluminum and Building Products
 400 WEST PICNAB ROAD
 FORT LAUDERDALE, FL 33309
 PHONE 954.970.9999 FAX 954.970.9988

no.	date	by	description

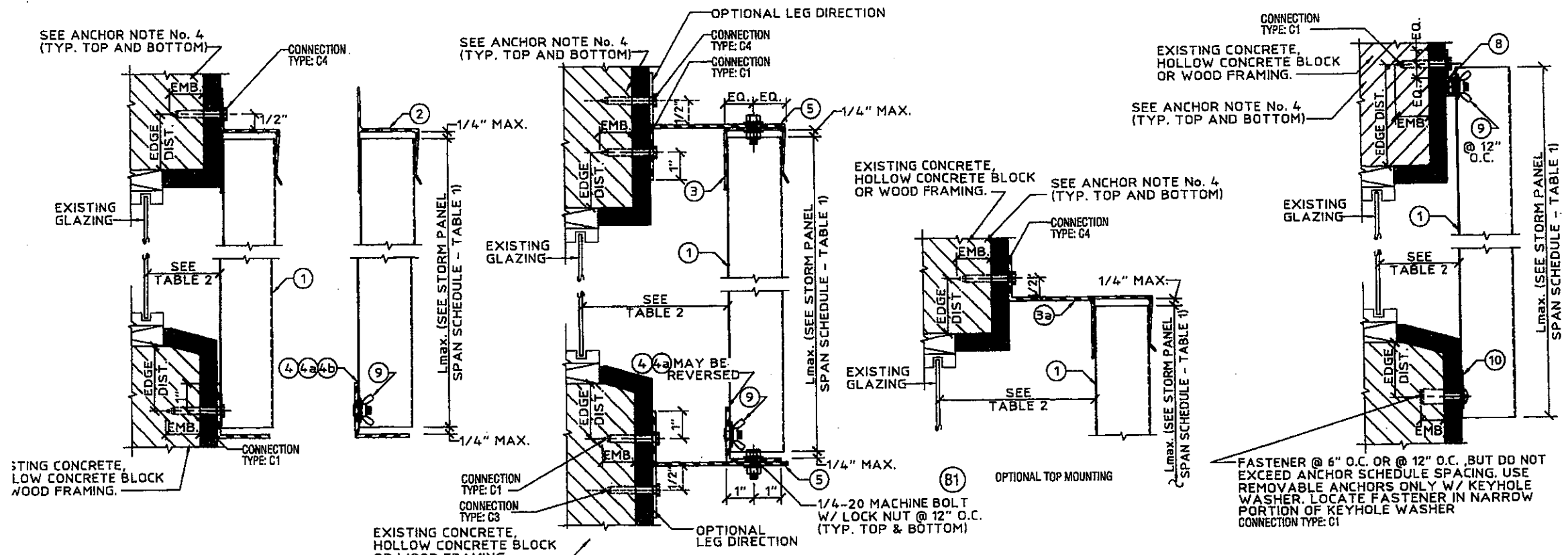
V.J. Knezevich
 Professional Engineer
 FL License No: PE 0010683
 FLORIDA CONTRACT NO.: 27888

Sept 3, 2008

drawn by: wbe
 scale: AS NOTED
 date: 09/01/2008
 project no.: 08-352

PAGE 1 of 6

0.0615" ALUMINUM STORM PANEL



(A) WALL MOUNT SECTION
SCALE: 3" = 1' - 0"

(B) BUILD-OUT MOUNT SECTION
SCALE: 3" = 1' - 0"

(C) TRACK/DIRECT MOUNT SECTION
SCALE: 3" = 1' - 0"

(D) CEILING/FLOOR MOUNT SECTION
SCALE: 3" = 1' - 0"


(E) "PASS THRU" SECTION
SCALE: 3" = 1' - 0"

(F) CEILING MOUNT / BUILD OUT SECTION
SCALE: 3" = 1' - 0"

DETAIL (E) ("PASS THRU" SEC.) ANCHOR SCHEDULE			
1/4" #17W TAPCON W/ 1-3/4" MIN. (CONC.) OR 1-1/4" MIN. (BLOCK) EMBEDMENT	1/4" # POWERS CALK-IN W/ 7/8" EMBEDMENT & 1/4"-20 MINIMUM 1-3/4" EMBEDMENT STAINLESS STEEL MACHINE SCREW	1/4" # x MIN. 2-1/2" LONG WOOD LAG SCREW W/ 1-3/4" EMBEDMENT SHEAR PARALLEL OR PERPENDICULAR TO WOOD GRAIN	
CONC. (3,82 KSI)	HOLLOW C-90 BLOCK CONC.	CONC. (2,00 KSI)	WOOD
12"	4"	7"	12"

PRODUCT REVISED
as complying with the Florida Building Code
Acceptance No 09-0114.04
Expiration Date 07/19/2011
By *Helmut A. Mahr*
Miami Dade Product Control Division

PRODUCT RENEWED
as complying with the Florida Building Code
Acceptance No 11-0428.04
Expiration Date 07/19/2016
By *Helmut A. Mahr*
Miami Dade Product Control



KNEZEVICH ASSOCIATES
Consulting Engineers
2560 S.W. 105th Terrace
Davie, Florida 33324
(954) 821-8833 • F (954) 452-7860 • COA 27880
www.knezevich.com email: vk@knezevich.com

Copyright © 2008 Knezevich & Associates, LLC d/b/a Knezevich Associates
400 WEST MOVAB ROAD
FORT LAUDERDALE, FL 33309
PHONE 954.970.9999 FAX 954.970.9988

Town & Country
INDUSTRIES
Wholesale Aluminum and Building Products

revisions	description	no.	date	by

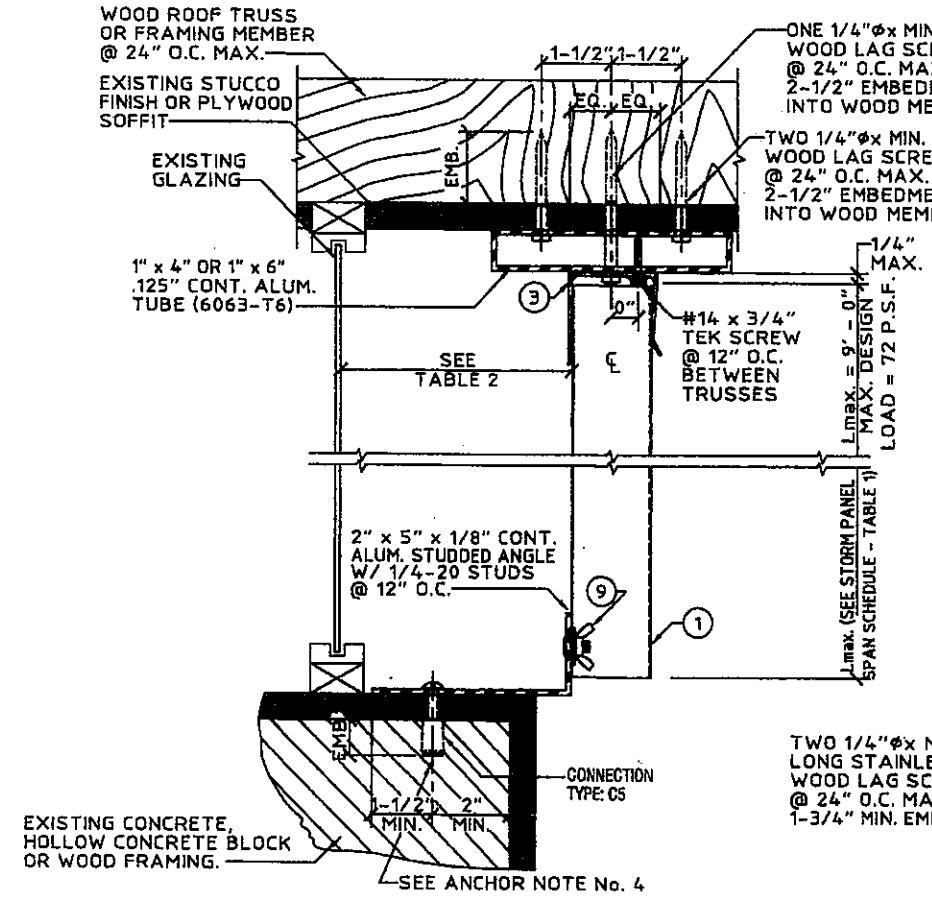
V.J. Knezevich
Professional Engineer
FL License No. PE 0010663
FLORIDA COA No.: 27880

Sept 3, 2008

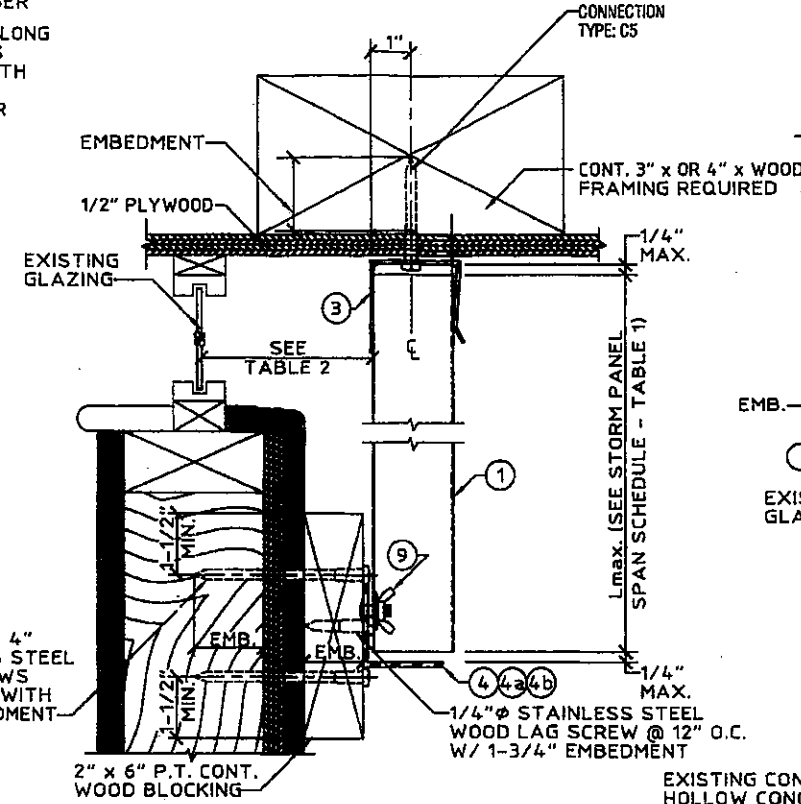
drawn by *wbs* AS NOTED
date 09/01/2008
project no. **08-352**

PAGE 2 of 6

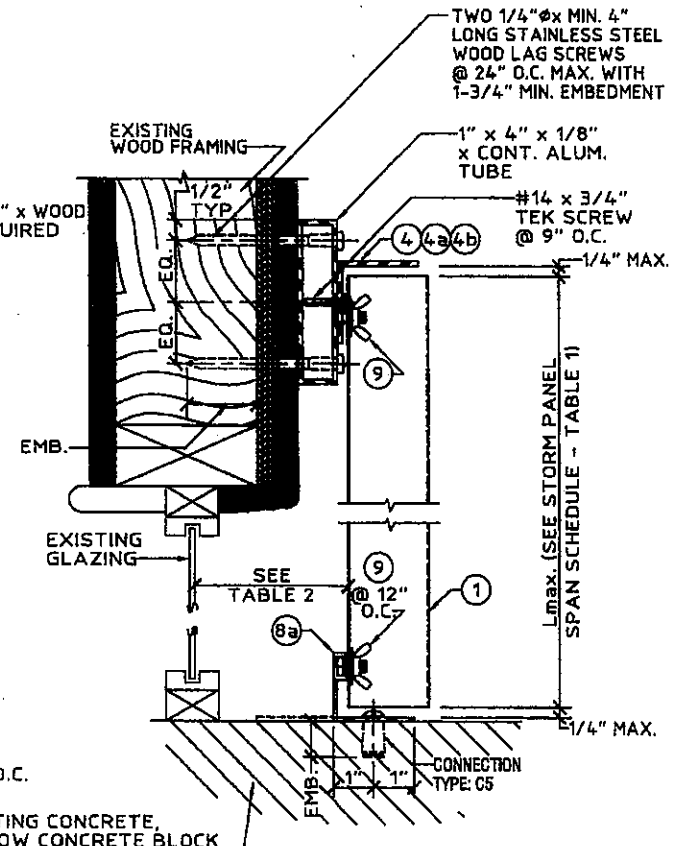
0.0615" ALUMINUM STORM PANEL



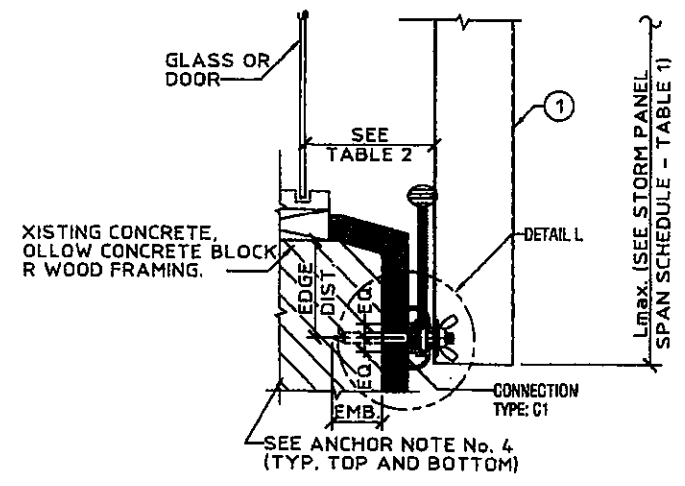
G BUILD-DOWN / BUILD-OUT SECTION
SCALE: 3" = 1' - 0"



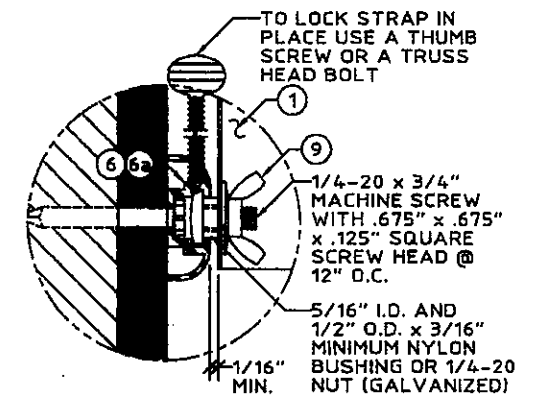
H CEILING/BUILD-OUT MOUNT SECTION
SCALE: 3" = 1' - 0"



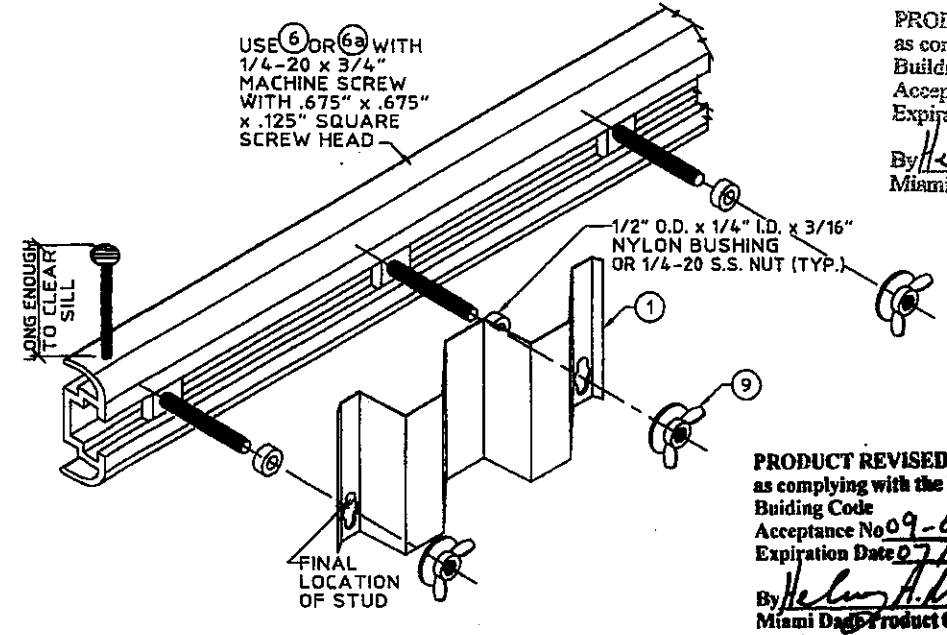
J BUILD-OUT/FLOOR MOUNT SECTION
SCALE: 3" = 1' - 0"



K C-TRACK ASSEMBLY - INSIDE MOUNT
SCALE: 3" = 1' - 0"



L G-TRACK ASSEMBLY - (BLOW UP)
SCALE: HALF SIZE



M C-TRACK ASSEMBLY (ISOMETRIC VIEW)
N.T.S.

PRODUCT RENEWED
as complying with the Florida
Building Code
Acceptance No 11-0428.04
Expiration Date 07/19/2016
By Helmy A. M...
Miami Dade Product Control

PRODUCT REVISED
as complying with the Florida
Building Code
Acceptance No 09-0114.04
Expiration Date 07/19/2011
By Helmy A. M...
Miami Dade Product Control
Division



KNEZEVICH ASSOCIATES
Consulting Engineers
2590 S.W. 105th Terrace, Davie, Florida 33324
(954) 821-0933 • F (854) 452-7960 • COA 27989
www.knezevich.com email: VK@knezevich.com

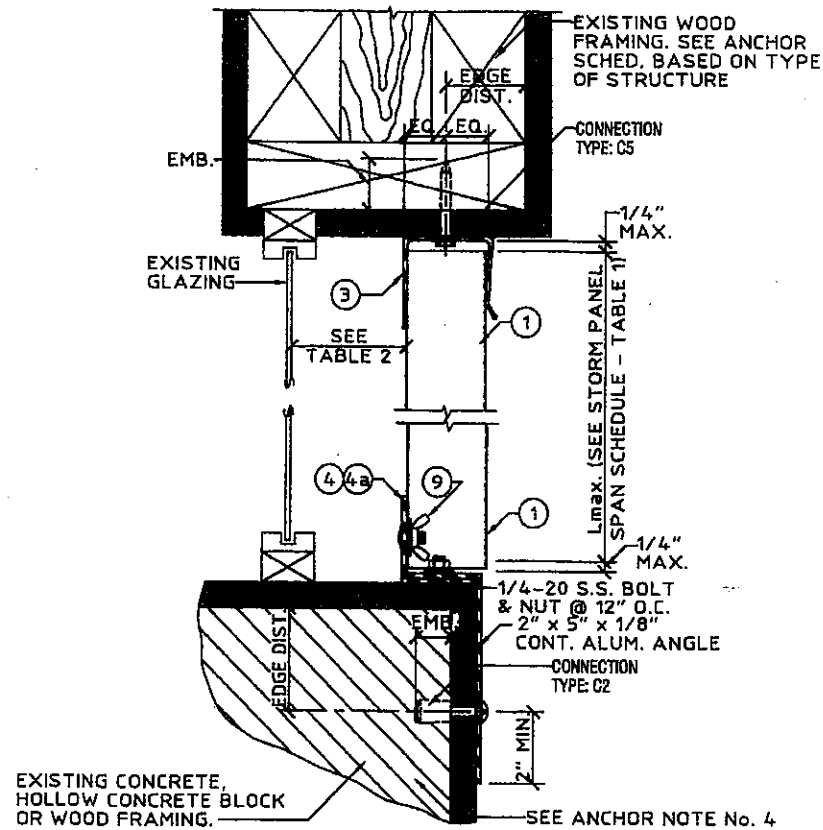
Town & Country
Wholesale Aluminum and Building Products
400 WEST HAVEN ROAD
FORT LAUDERDALE, FL 33309
PHONE 954.970.9999 FAX 954.970.9988

no.	description	date	by

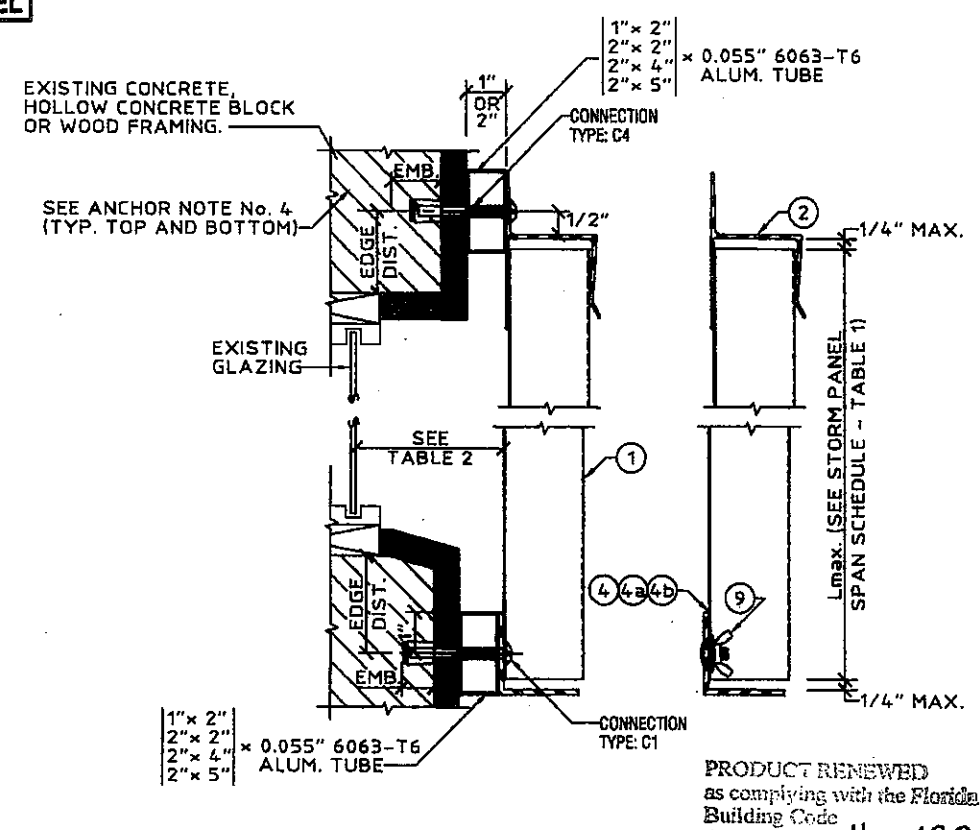
V.J. Knezevich
Professional Engineer
FL License No: PE 0010083
FLORIDA COA No. 27988

Sept 3, 2008
drawn by AS NOTED
date 09/01/2008
project no. 08-352

0.0615" ALUMINUM STORM PANEL

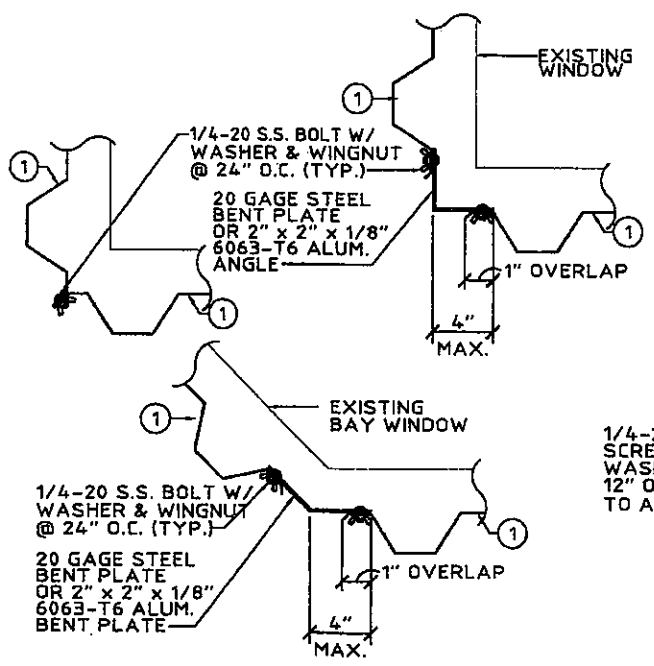


(N) WOOD CEILING/ INSIDE MOUNT SECTION
SCALE: 3" = 1'-0"

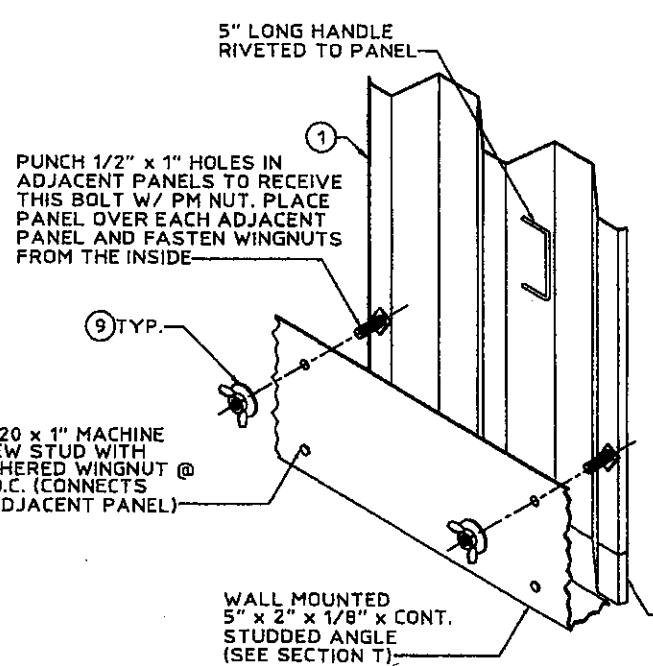


(P) WALL MOUNT SECTION
SCALE: 3" = 1'-0"

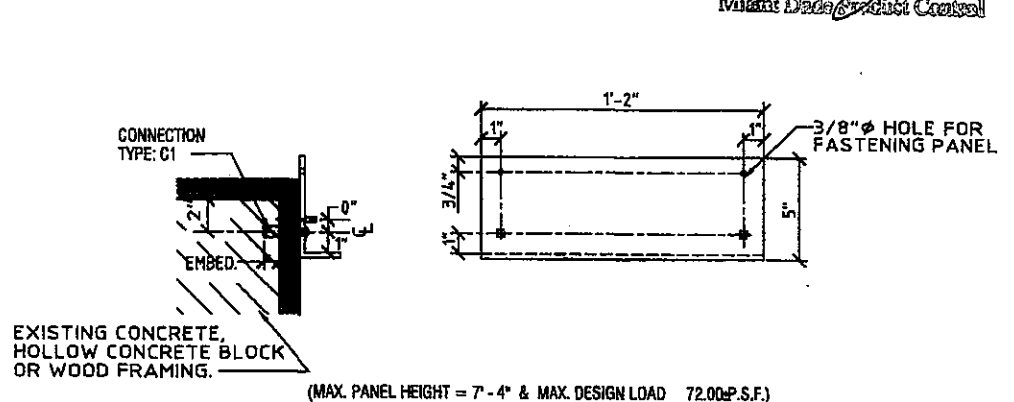
PRODUCT RENEWED
as complying with the Florida
Building Code
Acceptance No. **11-0428.04**
Expiration Date **07/19/2016**
By *Helmut A. Mahr*
Miami Dade Product Control



(R) TYPICAL CORNER CLOSURE DETAILS (PLAN)
SCALE: 1-1/2" = 1'-0"



(S) OPTIONAL INTERIOR FASTENING DETAIL (ISOMETRIC)
N.T.S.



(T) INTERIOR FASTENING ANGLE ASSEMBLY
SCALE: 1-1/2" = 1'-0"

DETAILS (S) & (T) NOTE:
THESE DETAILS DEPICT THE
CONNECTION OF THE LAST PANEL
FOR AN OPENING WITH PANELS
INSTALLED FROM INSIDE. USE
OF THESE DETAILS SHALL BE IN
CONJUNCTION WITH AN "H"
HEADER OR "U" HEADER TOP
MOUNT.

PRODUCT REVISED
as complying with the Florida
Building Code
Acceptance No. **09-0114.04**
Expiration Date **07/19/2011**
By *Helmut A. Mahr*
Miami Dade Product Control
Division

K9

KNEZEVICH ASSOCIATES
Consulting Engineers
2580 S.W. 105th Ave. Suite 33324
Miami, Florida 33124
(954) 821-6933 • F: (954) 452-7880 • COA 27888
www.knezevich.com • email: vk@knezevich.com

Copyright © 2008 Knezevich & Associates, LLC d/b/a Knezevich Associates

Town & Country
INDUSTRIES
Wholesale Aluminum and Building Products

400 WEST McVAY ROAD
MIAMI, FLORIDA 33135
PHONE 954.970.9999 FAX 954.970.9988

no.	date	by	description

V.J. Knezevich
Professional Engineer
FL License No: PE 0010653
FLORIDA COA NO: 27888

[Signature]
Sept 3, 2008

drawn by *[Signature]*
checked by *[Signature]*
AS NOTED

date 09/01/2008
project no. **08-352**

