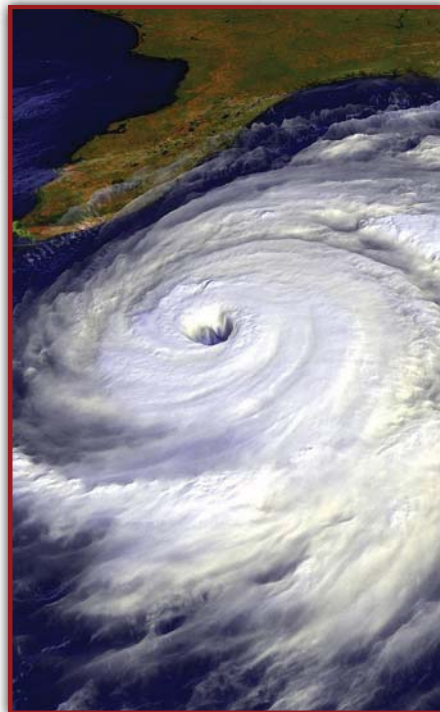




eye on Storm Safety



www.eyewallarmor.com

phone: 954.970.9999

BEFORE THE STORM:

- Keep your TV and/or radio tuned to local news stations for continuous weather updates, or visit www.wunderground.com/tropical, www.weather.com/tropical and www.nhc.noaa.gov online.
- Fasten your Eyewall Armor hurricane shutters and storm panels securely in place.
- Prepare an emergency evacuation plan.
- Determine the location of the nearest hurricane shelter.
- Fill any medical prescriptions.
- Visit an ATM for cash.
- Inspect and test your generator, and purchase enough fuel for it in the event of sustained power outages.
- Fill your automobile with gas.
- Place all valuable documents, insurance policies, etc. inside a zip-lock bag, and store in a safe, dry place.
- Back up all pertinent information, then unplug, cover and store your computer and other major appliances.
- Purchase non-perishable food (soup, nuts, crackers, dried fruit, etc.), water (at least 1 gallon per person per day), sundries (toilet paper, paper towels, soap, hand disinfectant, personal grooming items, etc.) and emergency supplies (battery-powered flashlights and radio, extra batteries, candles, propane or charcoal grill, lighter, coolers, ice, paper plates and towels, garbage bags, plastic cups, first-aid kit, etc.).
- Photograph or videotape the interior and exterior of your home, along with any valuable possessions covered by insurance.
- Charge your cell phone, and purchase a cell phone adapter for your automobile.

DURING THE STORM:

- Stay inside your residence, and away from doors and windows.
- Move to an interior room during the peak of the storm.
- Do not venture outdoors at any time, especially during the “eye” of the storm, until the hurricane has completely passed by.
- Listen for the latest storm updates.
- Do not use cell phones or electrical appliances.

AFTER THE STORM:

- Listen for the latest post-storm updates regarding power outages and restoration, as well as food and fuel availability.
- Do not venture away from the immediate vicinity of your home until roads have been cleared of debris and downed power lines – one of the major causes of death following a major storm.
- Photograph or videotape damages to the interior and exterior of your home, along with any valuable possessions covered by insurance.
- Contact your insurance company immediately to report any damage to your home or property.